



Winter/Spring 2022

The Picture Perfect Times

A Newsletter from
Picture Perfect Landscape / Christmas Decor

Celebrating 30 years of service



New

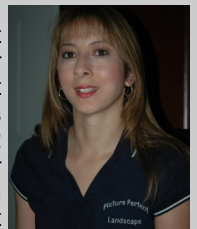
Financing Also Available
for Qualified Clients:

12 month Same as Cash or
6.99% 5-year Fixed Loan



2022 has finally arrived. **NOTE FROM OUR VENDORS:** Due to many folks being at home last 2 years and doing projects, there will be expected pricing increases as well as plant/tree shortages at the nurseries and certain building materials at the paver suppliers. We continue to see this with pools and places like Home Depot for fencing and decking. So if you are thinking of getting it done this year, the sooner you can get your order in the better. Now that most kids have returned to some type of hybrid school model, you will want to get projects completed so you can enjoy your summer. Did you put off that project last year due to a busy schedule? Perhaps it's something as simple as cleaning up your planting beds and updating the look of your dated or overgrown landscape with some newer lower maintenance shrubs.

Hopefully the next 6 weeks is mild with no major snow or ice storms. New England—so unpredictable and never 2 years the same. 2020 the ground never froze and spring was early. So once we get through the short month of February Spring is usually right around the corner (March 20) so we're focusing on warmer sunnier days ahead. Now is the time to start working on your landscape budget and plans. Every year during that first warm week, we get swamped with calls from new clients that have finally emerged from their winter cocoons to take a look at their yards. We are continuing to anticipate busier spring requests like we experienced last 2 years. **Our goal has always been to take care of our existing clients first.** That's why we send out our spring renewal packages early to offer an incentive to clients that sign up for maintenance service in February to allow us to prepare, reserve materials and schedule. Spring cleanups are our first type of work that we do and gets the ball rolling before other landscape construction projects. You not only get a better value/price, but also save on the amount of labor/mulch needed by doing this before the shrubs start to leaf out and your perennials emerge. It's much easier to work in beds where flowers/bulbs have not come up yet. Temperatures are much cooler, weeds are still minimal and you can check us off your SPRING To Do List!



Kim
office and
sales manager

Give us a call or email today to start planning your outdoor projects !!! 860-228-3915

Patios



Cleanup an area and entertain family & friends!

Walks & Plantings



Simple Easy to maintain for busy homeowners



Spring Maintenance



Pruning & Winter Damage: It is very important to make sure you do not ignore your plantings. That means if they are getting overgrown you have to give your plants a pruning sometime in late winter or early spring when it is most beneficial. If your plants and especially shrubs and ornamental trees become leggy, they are more prone to breakage during storms. Some plants also can not recover as quickly as they mature and may have to be replaced if size and space become limited. We've seen this in the past with certain evergreens. 2020 summer storm was pretty memorable with all the tree and landscape damage due to drought conditions. And then 2021 was the third wettest year on record and lots of extra growth. So if you're from New England you know Mother Nature likes to keep us landscapers on our toes. Once the weather warms up, unless we have typical spring rains remember to give your plantings and lawns a deep watering at least once a week or you risk stressing out your already established trees and shrubs. Stress makes plants and lawns more prone to disease or insect damage. **Gator Watering bags** can help assist with watering trees providing slow watering down deep to the roots. **Spring Mulch:** Dress-up planting beds with fresh mulch. Mulch helps retain moisture keeping plant roots cool, creates a barrier for weeds, and gives your landscape a finished look. We sell and deliver our dark brown, shredded, pine/hemlock bark mulch for your landscaping needs. Also remember to use weed spray like Roundup, Natria or Avenger to kill existing weeds and then Preen weed preventer sprinkled on top of mulch, stone or sweep it into the joints of your walkway, drive or cobblestone to assist with ongoing weed control every couple of months or hire a professional. Visit our website for more info on landscape and lawn maintenance tips and Call us today for a quote on our weeding, pruning & mulching service. It's time to spruce up your landscaping for the spring and summer so you can come home and enjoy your landscaping investment! www.perfectscapes.com or call 860-228-3915



Weed, Prune Edge Beds & Mulch



curb appeal

Planning a summer party? Spruce up your landscape & impress your friends & family by visiting our website for new ideas on updating your yard. A little change can go a long way.

Create useful areas in your backyard that you can enjoy with your family and friends. *Cut down on lawn areas and weeds with mulch or larger river stone...*



Clean Space for Outdoor Dining, Entertaining, or School/Work Space



Outdoor Patios Areas: Many homeowners are putting a lot of thought & planning into their home additions these days. There are many options available.

You can include the use of partially enclosed gazebos with either canopies or pergolas as a roof for shading and adding privacy. Sometimes an oversized patio umbrella and an outdoor fan is all you need to get some cool shade. Create a clean outdoor living space with a view of your backyard for the warmer seasons by installing an open gazebo/canopy on a patio with side curtains for privacy and protection from the elements and insects. You can even create different areas on a concrete paver patio for sitting & relaxing with a good book, grilling, enjoying a fire, children's area with picnic table, entertaining with friends around a bar...the ideas are endless. Let us design an outdoor patio designed for your lifestyle and specific needs keeping in mind easy to take care of. Great for entertaining or just relaxing after a long day and it will give many years of enjoyment for both family and friends. Call us today for a free consultation & quote. Take advantage of our more flexible spring/summer schedule and explore *your* possibilities today!!!

Extend your family's quality time outdoors this summer with an inviting fire...

One of today's hottest trends in outdoor entertaining is incorporating fireplaces, outdoor fire pits, and grills or chimneys in your backyard so you can enjoy a cozy fire during spring, summer, and fall. For decades homeowners out West and down South, have extending their quality time outdoors with family and friends by installing heating elements that are functional as well as enjoyable. Instead of the pool or Jacuzzi that doesn't quite get used as often when company comes over, they create an area with benches and chairs with an inviting fire to gather around safely. Enjoy a delicious meal outdoors and then have a place to converse or to enjoy romantically with that special someone as the evenings start to get cooler but you still want to linger outdoors on a summer night.

Customize a backyard living area for cleaner usable space and your family's lifestyle...



Fire Pit Kits



**We are a Unilock®
Authorized Contractor**



Unilock fire pit area and sitting wall for entertaining.



Above is a more informal area to relax and enjoy. Created with cobblestone edging, crushed stone and mulch.

www.perfectscapes.com

Retaining Walls



Design Build Maintain

Concrete Walls offer grading and retaining solutions with style and durability; can also serve as additional seating around fire pit areas



Concrete Stairs & Walks



New or replacement concrete stairs and stepping stones for sloped areas



Did you put off that project last year due to a busy schedule? Over the years walkways and patio areas will usually need some cleaning up due to dirt and debris from trees like pollen and sap or moss/weeds. Pavers, steps, walls and cobblestone may need resetting or walkway edging can pop up over time especially with Connecticut's fluctuating temperatures or due to drainage issues once lawns or beds mature. Weather (rain and snow) sure can do damage in a short period of time also causing drainage and safety issues that only worsen over time if not addressed properly. Perhaps Mother Nature's critters are to blame. Insects such as ants, chipmunks and moles/voles are the top 3 home-wreckers and need to be addressed each season. Perhaps you would like to create your own backyard oasis off your deck or a patio with either an easy to care for sitting area with cooling water feature or relaxation garden. Incorporate a fire pit area to enjoy with friends and family during the evenings especially during the cooler evenings and still stay socially distanced. Extend **your** living space outdoors this year to enjoy the beautiful New England weather & Stay safe at home.

Custom Patios





Some Spring Tips to Help Your Landscape in Spring

***SHARPEN Garden Tools** Having the right sharp tool for the job makes all the difference just like a chef doesn't like dull knives when chopping food.

***Check Irrigation Systems**-don't wait until the summer heat to repair irrigation heads, adjust watering schedules from last year if needed

***Pruning** not only keeps shrubs and trees looking good, it also eliminates unnecessary foliage that takes more watering; plants like to conserve water and energy during the warm summer. Plus leggy plants and tree branches are more

prone to damage later in the summer, fall and winter from storms and heavy winds/snows which will cause broken branches and splitting trunks similar to last summer's tree damage.

***Clean Up Winter Leaves, Debris and Weed Removal**-Just like you cleanup up your floors and do spring cleaning indoors, it's important to give your lawns and landscape beds (especially around your homes foundation) a good cleanup when snow is gone. Also Weeds can compete with landscape plants for water and weaken or destroy your trees and shrubs. Remove the weeds by hand or checkout our updated blog articles on weed control alternatives-

Picture Perfect recommends applying both **Roundup, Natria** or some other type of weed killer first (for existing weeds) & then **Preen** which works for about 8-12 weeks (to discourage new weeds) to your beds to dramatically decrease weed growth & cut down on maintenance.)

***Lastly Mulch Plant Roots**-Replenish organic mulches around your plants each year to improve soil, reduce moisture loss & keep roots cool during the summer months. Keep mulch away from plant trunk or main stem.

Proper plant care and watering will keep your landscape healthy and looking Picture Perfect all year long.

GARDEN WITH CHILDREN. Give them their own space in the yard for planting flowers or veggies. It will give them something to be proud of and usually tends to keep them out of your other more formal areas if they have somewhere to experiment in all their own. It's pretty simple to start off with a simple tomato plant or peas/beans or cucumbers. Ask your local garden center for advice.



Before

Lower Maintenance Designed Plantings...

Evaluate Your foundation Plantings:

Whether it's a new home or one you've lived in for decades, it may be time to update your landscaping. Plants and trees become mature and overgrown and can detract from the look you want for your home. Evaluate your landscape with a professional and remove some unwanted plants and adding newer plant material with updated color and interest low maintenance easier to care for trees, shrubs and perennials.



Design

EVERGREENS: Privacy plantings offer screening from neighbors activities and vice versa...



After

Add curb appeal with color and textures including cobblestone edging with mulch



Services We Offer...

Complete Design Service (1,2, and 5 year phased plans available)

- ♦ Walkways Patios and Outdoor Areas-Landscape Plantings Plant bed pruning, edging, and mulching; also privacy screening trees and lower maintenance plantings
- ♦ Retaining Walls, Playscape or Shed Area and Water Features: Waterfalls, Ponds, & Streams
 - ♦ Christmas Décor Holiday Decorating & Lighting

We have the vision, the right people, the experience, & the most productive tools and processes to achieve one goal. To be able to give you the best service available!

Does your pool area need to be redone? New pool installed recently?



River stone and low maintenance plants



Concrete Paver Patio with Darker Border

**Christmas
Decor**

Starting in October...This will be our 22nd Season of Decorating: **WE DO IT ALL FOR YOU!**

Our **Full Service Program** offers our clients convenience. We design, install, maintain, remove and store our top of the line, commercial quality holiday lights & decorations for you to enjoy. New LED C9s and mini-lights use 85% less energy than regular lights!

Christmas in August Specials-

Existing clients Incentives for renewals before August 31st



- Roof and Ground Lighting with LED C9 bulbs
- Windows, Trees, and Shrubs with LED minilights
- Commercial quality garland, wreaths with or without lights
- Bows and Specialty Decor such as Ornaments and Signs
- Outdoor Digital Timer and electrical setup



Something to match *every* style.

CHRISTMAS DECOR SERVICES by Picture Perfect Landscape